



"Our products make the difference."

Two-Piece Toilets

A249L+T491.0GS

Two-Piece, Single Flush, Elongated Toilet

A Classic Design with Cutting-Edge Flushing Technology

The Laguna 1.0 uses DUKO's siphonic-based FlushCore Series technology, offering a balanced and ultra-efficient 1.0 gallons per flush, which saves nearly 35% more water than 1.6gpf toilets. The Anti-microbial, non-staining porcelain glaze helps keep the bowl cleaner with every flush. The system is both quiet and powerful, giving you peace of mind in your home and for the planet.

Product Features

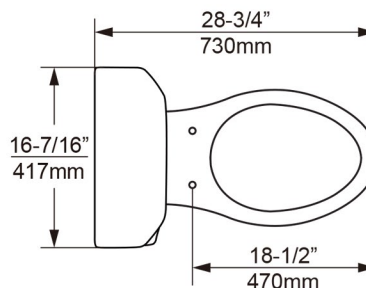
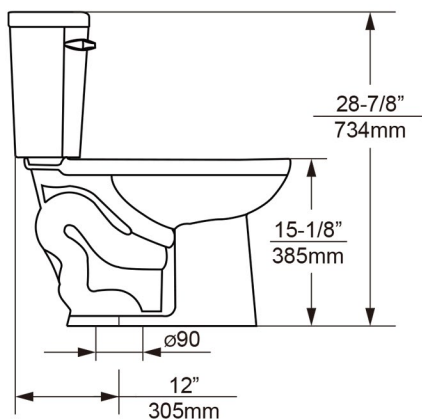
- Vitreous china, two-piece toilet, elongated toilet
- Anti-microbial, non-staining porcelain glaze
- Computer designed, fully glazed trapway
- Anti-microbial, non-staining porcelain glaze
- cUPC & WaterSense certified

Technical

- Single flush 1.0gpf (3.8Lpf)
- S-trap, 12"/305mm rough-in
- 2"/51mm fully-glazed trapway
- 18-1/2"/470mm from seat bolt hole to front
- 15-1/8"/385mm height of the bowl
- 3"/76.2mm tank outlet
- Nominal Dimensions:
28-3/4" x 16-7/16" x 28-7/8"
730mm x 417mm x 734mm

Quality Assurance

- Factory flush-tested
- 10-year limited warranty



www.dukobrand.com



1411 E Orangethorpe Ave, Fullerton, CA 92831 Tel: 800-315-3776 Email: info@dukous.com