



"Our products make the difference."

Two-Piece Toilets

A249HL+T491.0GS

ADA Height, Two-Piece, Single Flush, Elongated Toilet

A Classic Design with Cutting-Edge Flushing Technology

The Seneca 1.0 uses DUKO's siphonic-based FlushCore Series technology, offering a balanced and ultra-efficient 1.0 gallons per flush, which saves nearly 35% more water than 1.6gpf toilets. The Anti-microbial, non-staining porcelain glaze helps keep the bowl cleaner with every flush. The system is both quiet and powerful, giving you peace of mind in your home and for the planet.

Product Features

- Vitreous china, ADA height, two-piece, elongated toilet
- Aesthetically designed single flush trip lever
- Anti-microbial, non-staining porcelain glaze
- Computer designed, fully glazed trapway
- cUPC & WaterSense certified
- MaP Premium listed

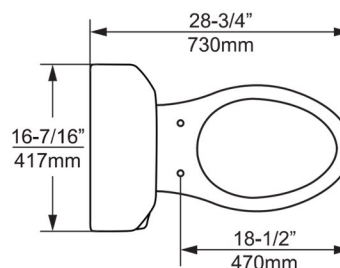
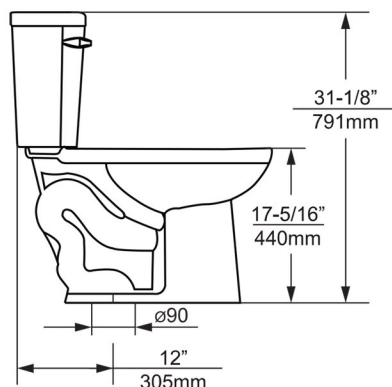
Technical

- Single flush 1.0gpf (3.8Lpf)
- S-trap, 12"/305mm rough-in
- Fully glazed, 2"/51mm trapway
- 3"/76.2mm tank outlet
- 18-1/2"/470mm from seat bolt hole to front
- 17-5/16"/440mm height of the bowl
- Nominal Dimensions:
28-3/4" x 16-7/16" x 31-1/8"
730mm x 417mm x 791mm



Quality Assurance

- Factory flush-tested
- 10-year limited warranty



www.dukobrand.com



1411 E Orangethorpe Ave, Fullerton, CA 92831 Tel: 800-315-3776 Email: info@dukous.com