



“Our products make the difference.”

Two-Piece Toilets

A249HL+T49D

ADA Height, Two-Piece, Dual Flush, Elongated Toilet

A Classic Design with a Water Saving Flush System

Made from a durable vitreous china, the Seneca II, an ADA compliant elongated toilet, delivers that classic look of a two-piece toilet. With a water-saving 1.6, 1.1 gallons dual flush, the quiet and dependable flushing system gives homeowners peace of mind while conserving water.

Product Features

- ADA compliant, vitreous china, elongated, two-piece toilet
- High performance bowl is designed for superior flushing power
- Computer designed, fully glazed trapway
- Anti-microbial, non-staining porcelain glaze
- cUPC & WaterSense certified

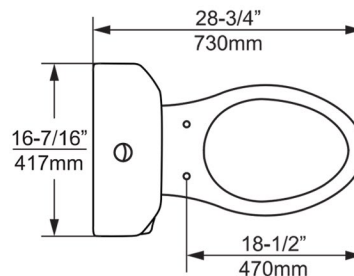
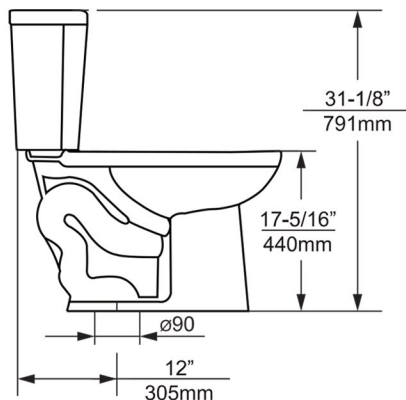
Technical

- 1.6, 1.1gpf (6.0, 4.0lpf)
- S-trap, 12"/305mm rough-in
- 2"/51mm fully-glazed trapway
- 18-1/2"/470mm from seat bolt hole to front
- 17-5/16"/440mm height of the bowl
- 3"/76.2mm tank outlet
- Nominal Dimensions:
28-3/4" x 16-7/16" x 31-1/8"
730mm x 417mm x 791mm



Quality Assurance

- Factory flush-tested
- 10-year limited warranty



www.dukobrand.com



1411 E Orangethorpe Ave, Fullerton, CA 92831 Tel: 800-315-3776 Email: info@dukous.com